

for research use only

Product: Mouse Ceramide kinase,mCERK ELISA Kit

Specificity: Recombinant and natural Mouse Ceramide kinase,mCERK

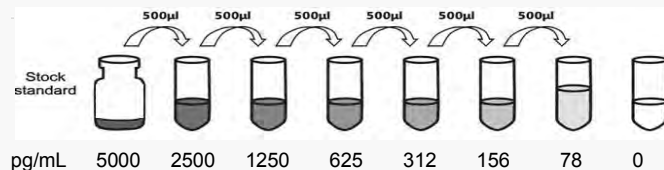
Synonyms: Ceramide kinase(mCERK),;

Acylsphingosine kinase,;

Catalog No.:AAA13340 **Sandwich 48T**

Standard Preparation

Reconstitute the Standard with 1.0 mL of Sample Diluent. This reconstitution produces a stock solution of 5000 pg/mL. Allow the standard to sit for a minimum of 15 minutes with gentle agitation prior to making serial dilutions (Making serial dilution in the wells directly is not permitted). The undiluted standard serves as the high standard (5000 pg/mL). The Sample Diluent serves as the zero standard (0 pg/mL).



Detection Range: 78-5000 pg/mL

Performance Characteristics: Intra-Assay CV: ≤5.9%

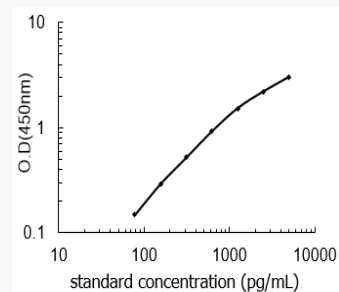
Inter-Assay CV: ≤9.1%

Spike Average Recovery: 102%

Typical Data

Results of a typical standard curve are provide for demonstration only and should not be used to obtain test results.

A standard curve must be run for each set of samples assayed.



| pg/mL | Mean O.D. |
|-------|-----------|
| 5000 | 3.028 |
| 2500 | 2.206 |
| 1250 | 1.532 |
| 625 | 0.927 |
| 312 | 0.52 |
| 156 | 0.293 |
| 78 | 0.149 |
| 0 | 0 |

IMPORTANT: Please refer to the supplied protocol for more information before the beginning.