

CERTIFICATE OF ANALYSIS

Product: Rat Ferritin ELISA Kit

Catalog No: AAA14498

Lot No: 23

Expiration Date: May, 2024

Kit Components	Lot Number	Contents
Plate	RT110822	1 plate of 96 wells with 12 strips
Calibrator	503F-4-L120	1 vial
HRP Conjugate	RT111122	1 vial
5X Diluent Buffer	---	50 mL
20X Wash Buffer	---	50 mL
Stop Solution	---	12 mL
TMB Substrate Solution	---	12 mL

Performance Characteristics:

Intra-Assay CV	< 10%	Passed
Inter-Assay CV	< 10%	Passed
Control Serum Recovery	> 85%	Passed

Calibrator Dilution:

Add 1.0 ml of distilled or de-ionized water to the calibrator and mix gently until dissolved. The calibrator is now at a concentration of 2.66 µg/ml (the reconstituted calibrator should be aliquoted and frozen if future use is intended). The standards need to be prepared immediately prior to use (see chart below). Mix well between each step. Avoid foaming.

Standard	ng/ml	Volume added to 1X Diluent	Volume of 1X Diluent
		→	
6	400	100 µl of Rat Ferritin Calibrator	565 µl
5	200	300 µl standard 6	300 µl
4	100	300 µl standard 5	300 µl
3	50	300 µl standard 4	300 µl
2	25	300 µl standard 3	300 µl
1	12.50	300 µl standard 2	300 µl
0	0		600 µl

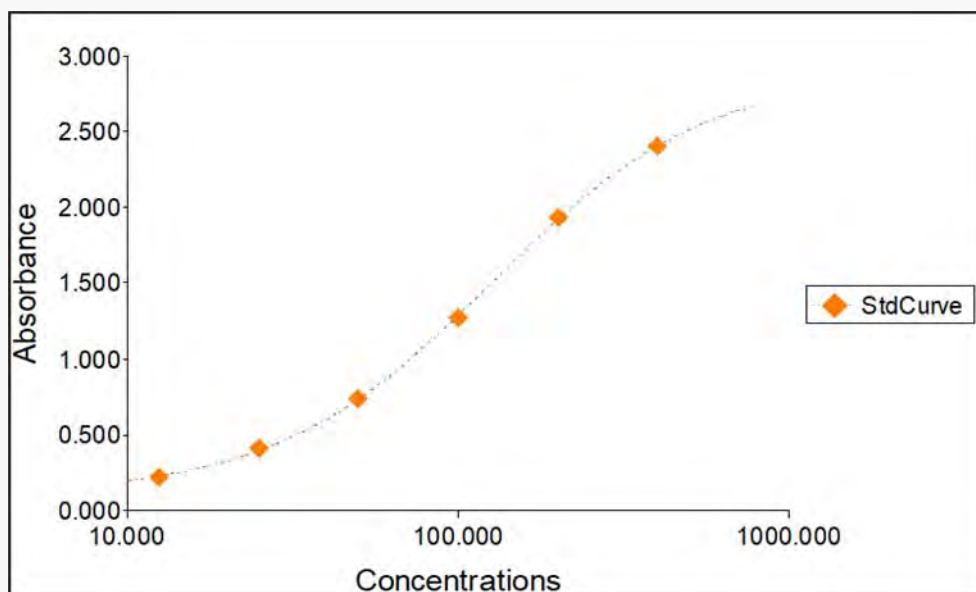
for research use only

Sample Standard Curve and Calculations ONLY. Do not use below report for result calculations. A standard curve should be generated each time the test is performed

Standard Curve Report

Standard #	Concentration (ng/mL)	Background Adjusted OD Value	Back Calculation	% Recovery
1	12.50	0.224	11.921	95.37
2	25	0.406	25.718	102.87
3	50	0.737	50.134	100.27
4	100	1.280	98.972	98.97
5	200	1.933	203.289	101.64
6	400	2.405	401.208	100.30

Standard Curve Graph



Standard Curve Background: 0.141A₄₅₀