

PRECISION

Intra-assay Precision (Precision within an assay): CV%<8%

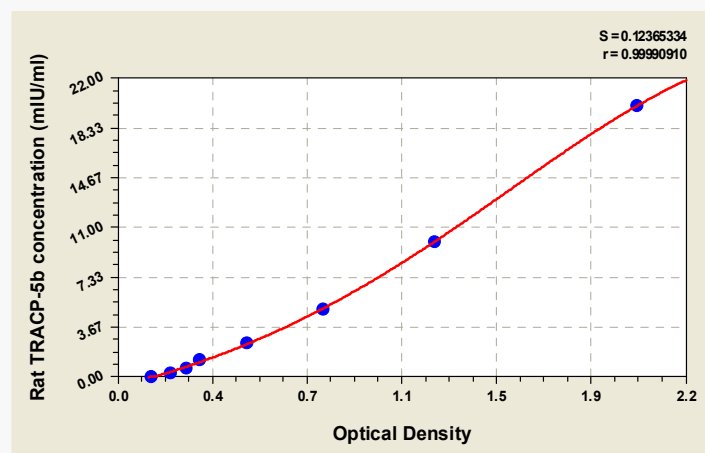
Three samples of known concentration were tested twenty times on one plate to assess.

Inter-assay Precision (Precision between assays): CV%<10%

Three samples of known concentration were tested in twenty assays to assess.

TYPICAL DATA

These standard curves are provided for demonstration only. A standard curve should be generated for each set of samples assayed.



mIU/ml	OD1	OD2	Average	Corrected
20	2.076	1.988	2.032	1.887
10	1.292	1.196	1.244	1.099
5	0.804	0.820	0.812	0.667
2.5	0.511	0.521	0.516	0.371
1.25	0.324	0.335	0.330	0.185
0.625	0.282	0.278	0.280	0.135
0.312	0.223	0.212	0.218	0.073
0	0.146	0.144	0.145	

LOD

0.078 mIU/ml

LINEARITY

To assess the linearity of the assay, samples were spiked with high concentrations of rat TRACP-5b in various matrices and diluted with the Sample Diluent to produce samples with values within the dynamic range of the assay.

	Sample	Serum(n=4)
1:1	Average %	92
	Range %	89-95
1:2	Average %	100
	Range %	97-103
1:4	Average %	93
	Range %	88-97
1:8	Average %	98
	Range %	93-102

RECOVERY

The recovery of rat TRACP-5b spiked to levels throughout the range of the assay in various matrices was evaluated. Samples were diluted prior to assay as directed in the Sample Preparation section.

Sample Type	Average % Recovery	Range
Serum (n=5)	94	90-96
EDTA plasma (n=4)	95	91-97