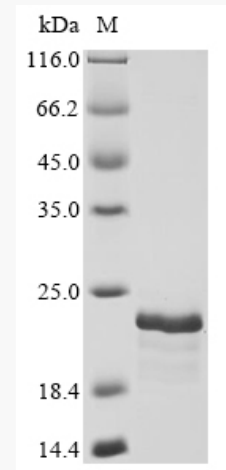
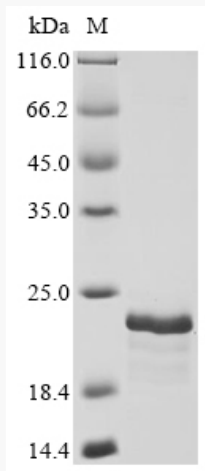


*for research use only*  
**Datasheet**

|                        |   |
|------------------------|---|
| <b>Product Name</b>    | Recombinant Rat Osteocrin(Ostn),partial   |
| <b>Catalog Number</b>  | AAA15936  |
| <b>Expression host</b> | <i>E.coli</i>   |
| <b>Product Info</b>    | N-terminal 6xHis-SUMO-tagged  |
| <b>Buffer</b>          | Lyophilized from 20 mM Tris-HCl, 0.5 M NaCl, 6% Trehalose, pH 8.0.<br>The volume before lyophilization is 20µl/vial.  |
| <b>Storage</b>         | Store at -20°C, for extended storage, conserve at -20°C or -80°C.   |
| <b>Notes</b>           | Repeated freezing and thawing is not recommended. Store working aliquots at 4°C for up to one week.   |
| <b>Relevance</b>       | Hormone that acts as a ligand for natriuretic peptide receptor NPR3/NPR-C and promotes bone growth and physical endurance in muscle. Acts as a regulator of osteoblast differentiation and bone growth by binding to natriuretic peptide receptor NPR3/NPR-C, thereby preventing binding between NPR3/NPR-C and natriuretic peptides, leading to increase cGMP production. Required to enhance physical endurance: induced following physical exercise in muscle and promotes cGMP production, probably by interacting with NPR3/NPR-C. May act as an autocrine and paracrine factor linked to glucose metabolism in skeletal muscle. |
| <b>AA sequence</b>     | SFSGFGSPLDRLSAGSVEHRGKQRRVVDHSSKKRFGIPMDRIGNRLSSSR  |
| <b>References</b>      | "Osteocrin is a specific ligand of the natriuretic Peptide clearance receptor that modulates bone growth."<br>Moffatt P., Thomas G., Sellin K., Bessette M.C., Lafreniere F., Akhouayri O., St-Arnaud R., Lanctot C.<br>J. Biol. Chem. 282:36454-36462(2007)  |

**Certificate of Analysis**

|                     |   |  |                            |
|---------------------|---|--|----------------------------|
| Product Name        | Recombinant Rat Osteocrin(Ostn),partial   |  |                            |
| Catalog Number      | AAA15936  |  |                            |
| Expression host     | E.coli  |  |                            |
| Product Info        | N-terminal 6xHis-SUMO-tagged  |  |                            |
| Buffer              | Lyophilized from 20 mM Tris-HCl, 0.5 M NaCl, 6% Trehalose, pH 8.0.<br>The volume before lyophilization is 20μl/vial.  |  |                            |
| Reconstitution      | We recommend that this vial be briefly centrifuged prior to opening to bring the contents to the bottom. Please reconstitute protein in deionized sterile water to a concentration of 0.1-1.0 mg/mL. We recommend to add 5-50% of glycerol (final concentration) and aliquot for long-term storage at -20°C/-80°C. Our default final concentration of glycerol is 50%. Customers could use it as reference. |  |                            |
| Batch Number        | DA04816a7g0   |  |                            |
| Nature              | Rat Ostn-(AA 82-131)-P61365-Partial Protein   |  |                            |
| Purification        | Affinity purified using IMAC  |  |                            |
| Recommended Storage | Short term  | 2 to 8 °C, one week from the date of receipt   |                            |
|                     | Long term   | -20 to -80 °C, twelve months from the date of receipt                                |                            |
| Form                | Lyophilized powder  |  |                            |
| Date of detection   | 2022.06.24  |  |                            |
| Test Items          | Specifications  |  | Results                    |
| Purity              | ≥90%, by SDS-PAGE quantitative densitometry by Coomassie Blue Staining.   |  | 90%                        |
| Molecular Weight    | Predicted band size: 21.6 kDa   |  | Observed band size: 22 kDa |



*for research use only*

|                                   |  |
|-----------------------------------|--|
| <b>Electrophoretic parameters</b> | (Tris-Glycine gel) Discontinuous SDS-PAGE (reduced) with 5% enrichment gel and 15% separation gel. |
| <b>Aseptic Processing</b>         | Not done   |
| <b>Endotoxin Level</b>            | Untreated  |
| <b>Activity</b>                   | Not tested   |
| <b>Conclusion</b>                 | pass   |