

## Certificate of Analysis

**Product name:** Human Soluble Fms like tyrosine kinase Receptor 1 ELISA Kit

**Catalog No.:** AAA16018

**Lot No:** BG191122HUS

**Exp:** May 22,2020

**Expiration date:** 6 months

**Storage:** 2-8° C

### PRECISION

Inter-assay CV%: 6.8 7.7

Intra-assay CV%: 5.2 6.9

### RECOVERY

Sample type

average% recovery

range

Serum

97

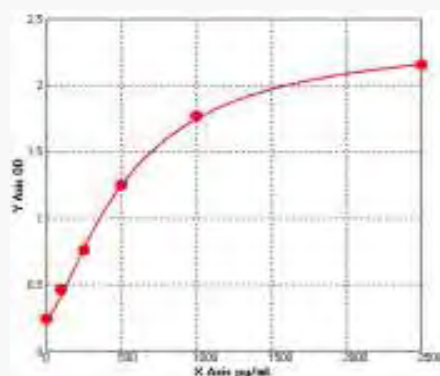
87-107%

### LINEARITY

		Serum
1: 2	Average % of Expected	95
	Range (%)	92-103
1: 4	Average % of Expected	92
	Range (%)	86-105
1: 8	Average % of Expected	88
	Range (%)	83-110
	Range (%)	

**STANDARD CURVE** for demonstration only:

	Con pg/ml	OD
A	0	0.237
B	100	0.461
C	250	0.753
D	500	1.248
E	1000	1.763
F	2500	2.145



Date: 2019.11.22