

for research use only

## Certificate of Analysis

**Product name:** Rat Cross linked C terminal Telopeptide of type I Collagen ELISA Kit

**Catalog No.:** AAA16348    **Lot No:**20240129C    **Exp:** Jul 29,2024

**Manufacture data:** Jan 29,2024    **Storage:** 2-8° C

### PRECISION

Inter-assay CV%: 6.1    7.6    Intra-assay CV%: 5.3    6.1

### RECOVERY

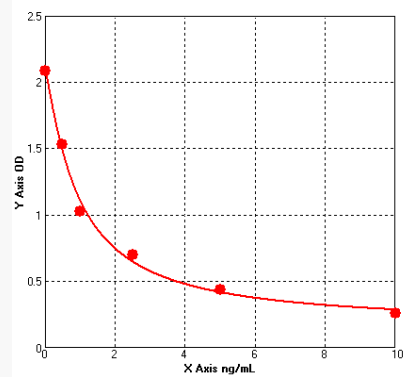
Sample type	average% recovery	range
Serum, Plasma	98	94-102%

### LINEARITY

		Serum
1: 2	Average % of Expected	97
	Range (%)	92-100
1: 4	Average % of Expected	93
	Range (%)	88-107
1: 8	Average % of Expected	91
	Range (%)	87-111

### STANDARD CURVE for demonstration only:

	Con ng/ml	OD
A	0	2.086
B	0.5	1.531
C	1	1.025
D	2.5	0.697
E	5	0.434
F	10	0.259



Date: 2024.01.29