

Certificate of Analysis

Product name: Mouse Pulmonary Surfactant Associated Protein C ELISA Kit

Catalog No.: AAA16495 **Lot No:** 20170106 **Exp:** 20170706

Expiration data: 6 months **Storage:** 2-8° C

PRECISION

Intra-assay CV%: 5.0 6.1 Inter-assay CV%: 7.3 7.8

RECOVERY

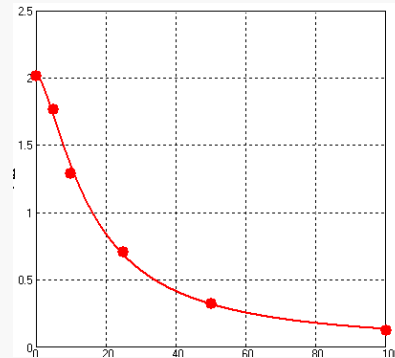
Sample type	average% recovery	range
Serum	97	93-101%

LINEARITY

		Serum
1: 2	Average % of Expected	96
	Range (%)	93-102
1: 4	Average % of Expected	92
	Range (%)	92-107
1: 8	Average % of Expected	89
	Range (%)	86-105

STANDARD CURVE for demonstration only:

	Con ng/ml	OD
A	0	2.016
B	5	1.765
C	10	1.291
D	25	0.708
E	50	0.324
F	100	0.125



Date: 2017.01.06