

Certificate of Analysis

Product name: Human Beclin 1 ELISA

Catalog No.: AAA16637 **Lot No:** BG190107HUC **Exp:** 2019 07 07

Expiration date: 6 months **Storage:** 2-8° C

PRECISION

Inter-assay CV%: 6.9 7.4 Intra-assay CV%: 4.3 5.9

RECOVERY

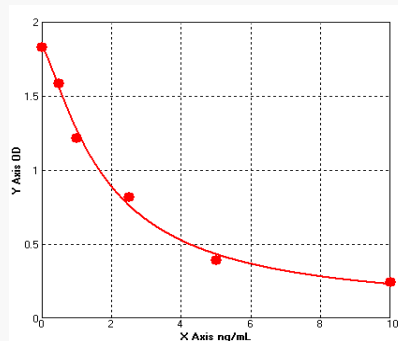
Sample type	average% recovery	range
Serum	97	87-107%

LINEARITY

		Serum
1: 2	Average % of Expected	96
	Range (%)	94-99
1: 4	Average % of Expected	92
	Range (%)	88-103
1: 8	Average % of Expected	86
	Range (%)	83-100
	Range (%)	

STANDARD CURVE for demonstration only:

	Con ng/ml	OD
A	0	1.825
B	0.5	1.585
C	1	1.214
D	2.5	0.813
E	5	0.39
F	10	0.242



Date: 2019.01.07