

Certificate of Analysis

Product name: Canine Cyclosporine A ELISA Kit

Catalog No.: AAA16745

Lot No: 20210621C

Exp: Dec 21,2021

Expiration date: 6 months

Manufacturing date: Jun 21,2021

Storage: 2-8° C

PRECISION

Inter-assay CV%:6.1 7.0

Intra-assay CV%: 5.2 6.3

RECOVERY

Sample type

average% recovery

range

Serum

96

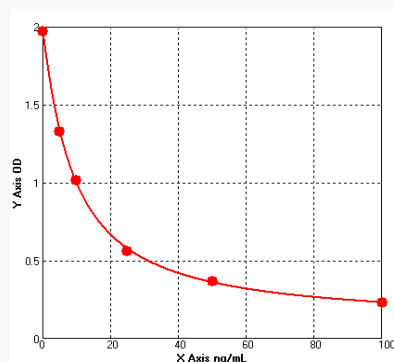
89-103%

LINEARITY

		Serum
1: 2	Average % of Expected	96
	Range (%)	93-102
1: 4	Average % of Expected	93
	Range (%)	88-105
1: 8	Average % of Expected	88
	Range (%)	85-106

STANDARD CURVE for demonstration only:

	Con ng/ml	OD
A	0	1.966
B	5	1.326
C	10	1.012
D	25	0.561
E	50	0.368
F	100	0.232



Date: 2021.06.21