

for research use only

Certificate of Analysis

Product name: Sheep Lipopolysaccharide binding protein ELISA Kit

Catalog No.: AAA16931

Lot No: BG231013SHC

Exp: Apr 13, 2024

Expiration date: 6 months

Manufacturing date: Oct 13, 2023

Storage: 2-8° C

PRECISION

Inter-assay CV%: 6.3 7.6

Intra-assay CV%: 5.6 6.4

RECOVERY

Sample type

average% recovery

range

Serum

96

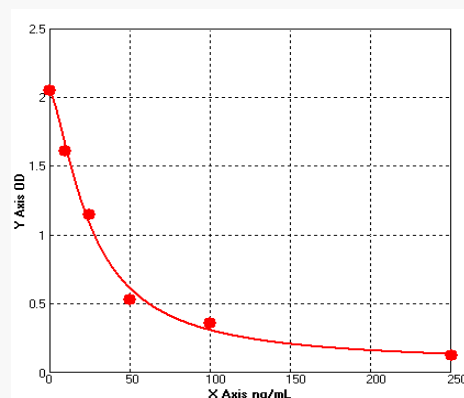
87-105%

LINEARITY

		Serum
1: 2	Average % of Expected	95
	Range (%)	93-102
1: 4	Average % of Expected	91
	Range (%)	90-105
1: 8	Average % of Expected	90
	Range (%)	86-110

STANDARD CURVE for demonstration only:

	Con ng/mL	OD
A	0	2.048
B	10	1.607
C	25	1.145
D	50	0.528
E	100	0.358
F	250	0.124



Date: 2023.10.13