

## Certificate of Analysis

**Product name:** Sheep Leptin ELISA Kit

**Catalog No.:** AAA16996 **Lot No:** 20170915

**Exp:** 20180315

**Expiration data:** 6 months

**Storage:** 2-8° C

### PRECISION

Inter-assay CV%: 5.9 6.2 Intra-assay CV%: 6.7 8.4

### RECOVERY

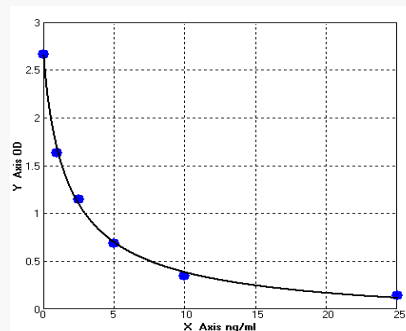
Sample type	average% recovery	range
Serum, Plasma	96	85-106%

### LINEARITY

		Serum
1: 2	Average % of Expected	93
	Range (%)	92-97
1: 4	Average % of Expected	95
	Range (%)	91-106
1: 8	Average % of Expected	96
	Range (%)	87-102

### STANDARD CURVE for demonstration only:

	Con ng/ml	OD
A	0	2.66
B	1	1.628
C	2.5	1.146
D	5	0.685
E	10	0.345
F	25	0.138



Date: 2017.09.15