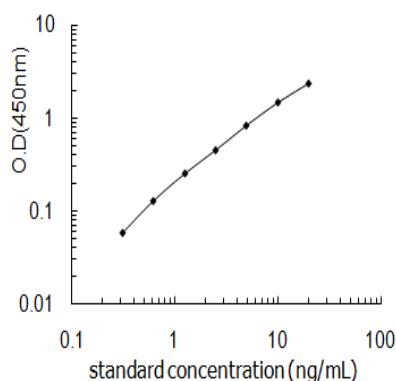


Certificate of Analysis

Product: Human Insulin-like growth factor-binding protein 7, IBP-7 ELISA Kit ELISA

Kit Catalog No: AAA2319 9 **Lot No:** 8G185C **Exp:** 2019.01.18

Results of a typical standard curve are provide for demonstration only and should not be used to obtain test results. A standard curve must be run for each set of samples assayed.



Performance Characteristics

Intra-Assay CV: $\leq 4.6\%$

Inter-Assay CV: $\leq 8.4\%$

Spike Recovery: 106%

Quick Reference Procedure

IMPORTANT: Please refer to the supplied protocol for preparation of **Working Stocks** as noted below.

Human Insulin-like growth factor-binding protein 7, IBP-7 ELISA Kit Standard Preparation(step 2)

Tube	Working Stock	S ₁	S ₂	S ₃	S ₄	S ₅	S ₆	S ₇	BL
Amount Taken from Tube to Left(mL)	---	0	0.5	0.5	0.5	0.5	0.5	0.5	---
Sample Diluent	---	1.0	0.5	0.5	0.5	0.5	0.5	0.5	1.0
Final Conc.(ng/mL)	20	20	10	5.0	2.5	1.25	0.625	0.312	0

Antibody Concentrate Preparation (Step 5)

Microplate Strips Used	2	4	6	8	10	12
Working Stock(μ L)	20	40	60	80	100	120
Conjugate Diluent(mL)	2.0	4.0	6.0	8.0	10.0	12.0

HRP Conjugate Concentrate (step 7)

Microplate Strips Used	2	4	6	8	10	12
Working Stock(μ L)	20	40	60	80	100	120
Conjugate Diluent(mL)	2.0	4.0	6.0	8.0	10.0	12.0