

for research use only

Product: Human Insulin-like growth factor-binding protein 7,

IBP-7 ELISA Kit

Specificity: Recombinant and natural Human Insulin-like growth

factor-binding protein 7,IBP-7

Synonyms: Insulin-like growth factor-binding protein 7(IBP-7,IGF-binding protein 7,IGFBP-7),;

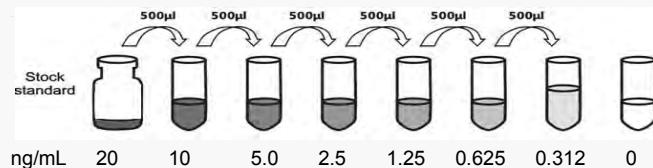
Tumor-derived adhesion factor(TAF),Prostacyclin-stimulating

factor,PGI2-stimulating factor,IGFBP-rP1,MAC25 protein,;

Catalog No.: AAA23199 Sandwich

Standard Preparation

Reconstitute the Standard with 1.0 mL of Sample Diluent. This reconstitution produces a stock solution of 20 ng/mL. Allow the standard to sit for a minimum of 15 minutes with gentle agitation prior to making serial dilutions (Making serial dilution in the wells directly is not permitted). The undiluted standard serves as the high standard (20 ng/mL). The Sample Diluent serves as the zero standard (0 ng/mL).



Detection Range: 0.312-20 ng/mL

Sensitivity: less than 0.12 ng/mL

Performance Characteristics: Intra-Assay CV: ≤4.6%

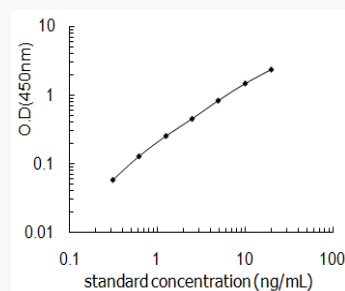
Inter-Assay CV: ≤8.4%

Spike Average Recovery: 106%

Typical Data

Results of a typical standard curve are provided for demonstration only and should not be used to obtain test results.

A standard curve must be run for each set of samples assayed.



ng/mL	Mean O.D.
20	2.384
10	1.479
5.0	0.834
2.5	0.46
1.25	0.255
0.625	0.131
0.312	0.058
0	0

IMPORTANT: Please refer to the supplied protocol for more information before the beginning.